



## Managing Students with Seizures and Epilepsies

A seizure is a change in sensation, awareness, or behavior brought by an electrical disturbance in the brain. Seizures are symptoms of epilepsy (which is defined as two or more unprovoked seizures).

It is a common disorder of the brain and can affect people of all ages; however,

children and older adults are more prone to them.

Some seizures can look like staring spells while other seizures can cause a person to collapse, shake, and become unaware of what is going on around them. Often times the cause is unknown and it can be a scary experience

when an episode occurs at a school setting such as in the classroom, at the playground, or on a bus.

Students who are prone to seizures will need special attention at all times and it is important to know the best ways to handle these situations if an episode is to occur.

### Tips for Supporting Students with Epilepsy

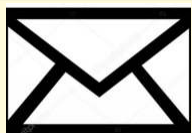
- Stay calm during seizure episodes
- Be supportive
- Have a copy of the child's seizure action plan
- Discuss seizure the action plan in the student's IEP
- Know child's medications and their possible side effects
- Encourage positive peer interaction
- Your behavior during a seizure episode can make a substantial difference in how students react and how the student with seizures copes with his/her condition.
- By reassuring other students that you know what to do and that everything will be all right, they will remain calm during seizure episodes.



The Epilepsy Foundation is a national non-profit with over 50 locations throughout the United States and has led the fight against seizures since 1968.

For additional resources and information, you can visit the Epilepsy Foundation website: [www.epilepsy.com](http://www.epilepsy.com)

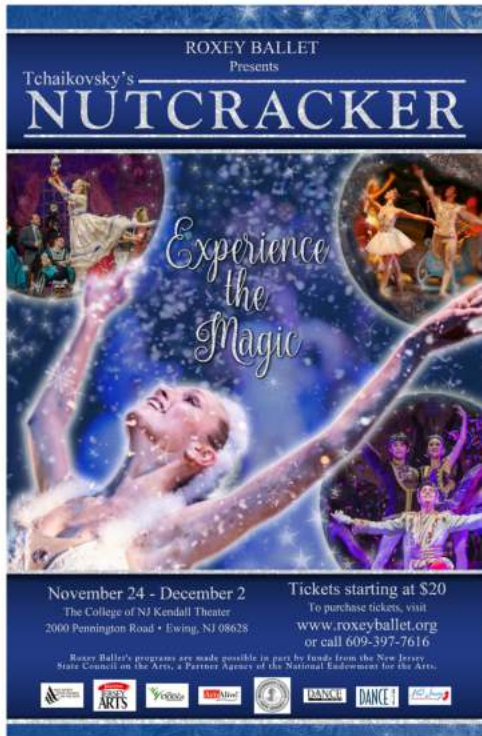
There is also a website for Epilepsy Foundation New Jersey: [www.epilepsy.com/new-jersey](http://www.epilepsy.com/new-jersey)



**Contact Melissa:**

[mtonna@hunterdonesc.org](mailto:mtonna@hunterdonesc.org)

# Roxey Ballet Presents Nutcracker



The Roxey Ballet of Lambertville, NJ is presenting two very special performances of Tchaikovsky's Nutcracker in addition to the regular season at TCNJ.

The show dates are from November 24th- December 2nd. Tickets

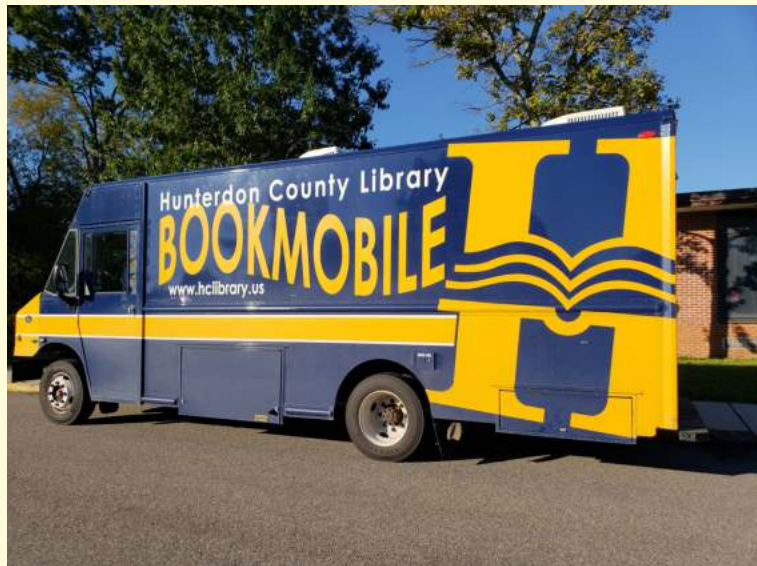
start at \$20. For more information or to purchase tickets, visit: [www.roxyballet.org](http://www.roxyballet.org)

Tracy MacDonald is a first grade autism TA at Copper Hill and also is a performer for the productions. Thank you for sharing this with the HCESC community!

## November Calendar:

- \* **November 8-9th - NJEA Teacher Conference**  
(School Closed for Students and Staff)
- \* **November 21st - Thanksgiving Recess Begins**  
(Early Dismissal)
- \* **November 22-23rd - Thanksgiving Recess**  
(School Closed for Students and Staff)

## Hunterdon County Library Book Mobile



There were some school libraries who had lost many books this year. As a result, the Hunterdon County Library Book Mobile has been visiting some of the elementary schools within the district. It is not only fun for the kids but also promotes reading by giving them the opportunity to still rent books.